



Do you know the Symptoms of Hair Lice?

Treatment:

- Lice medicine such as NIX. Nix is available at the Yellowhawk pharmacy
- Lice comb use
- Cleaning

Treat the infested person(s): Requires using an Over-the-counter (OTC) or prescription medication AND the use of a lice comb. Follow these treatment steps:

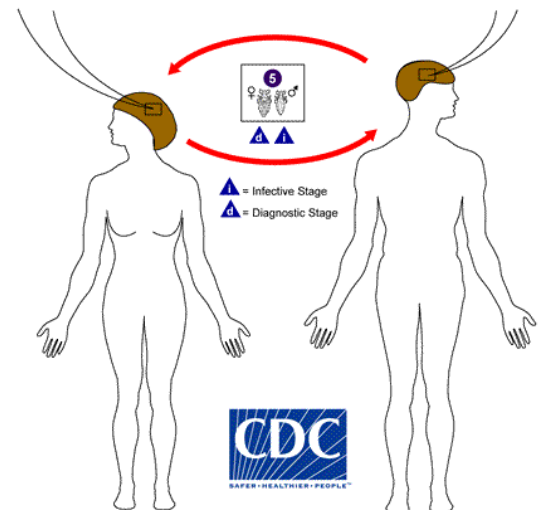
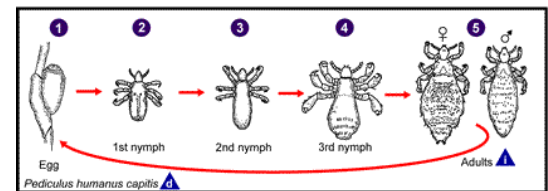
- Before applying treatment, it may be helpful to remove clothing that can become wet or stained during treatment.
- Apply lice medicine, also called pediculicide, according to the instructions contained in the box or printed on the label. If the infested person has very long hair (longer than shoulder length), it may be necessary to use a second bottle. Pay special attention to instructions on the label or in the box regarding how long the medication should be left on the hair and how it should be washed out.
- Use a lice comb after the lice medicine and 3-4 times the first week.

Using a Lice Comb

The best way to remove lice is by using a lice comb. The head lice treatment you opt for will likely involve combing out the nits and bugs. If it does not, then you risk the possibility of leaving behind lice and eggs that will soon lay eggs and hatch into another infestation.

How to use a Lice Comb

1. The best time to comb is immediately after washing the hair. You can use a spray in conditioner or leave some in to make the hair slippery.
2. Remove tangles with a comb or brush.
3. Work in small sections of hair at a time.
4. Secure the lice comb's teeth in the hair starting at the scalp, drag it through the section all the way to the tips.
5. Wipe the comb on a paper towel after each swipe. If you see nits or lice stick in the teeth, rinse the comb or dip it in soapy water.



Cleaning

Head lice do not survive long if they fall off a person and cannot feed. Follow these steps to help avoid re-infestation by lice that have recently fallen off the hair or crawled onto clothing or furniture.

1. Machine wash and dry clothing, bed linens, and other items that the infested person wore or used during the 2 days before treatment using the hot water (130°F) laundry cycle and the high heat drying cycle. Clothing and items that are not washable can be dry-cleaned **OR** sealed in a plastic bag and stored for 2 weeks.
2. Soak combs and brushes in hot water (at least 130°F) for 5–10 minutes.
3. Vacuum the floor and furniture, particularly where the infested person sat or lay.
4. Do not use fumigant sprays; they can be toxic if inhaled or absorbed through the skin.

How is hair lice spread?

- Head to head contact
- Sharing clothing such as hats, scarves, coats, hair ribbons or clips
- Do not share combs, brushes, or towels
- Do not lie on beds, couches, pillows, carpets, or stuffed animals that have recently been in contact with an infected person.

