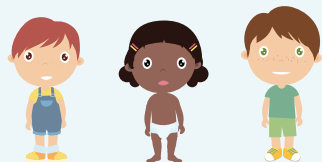
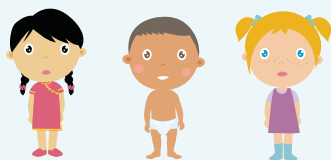


# Measles

IT ISN'T  
JUST A  
LITTLE  
RASH



Measles can be dangerous,  
especially for babies and  
young children.



## MEASLES SYMPTOMS TYPICALLY INCLUDE

- High fever (may spike to more than 104° F)
- Cough
- Runny nose
- Red, watery eyes
- Rash breaks out 3-5 days after symptoms begin



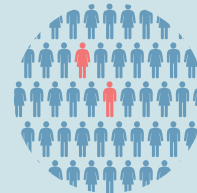
## Measles Can Be Serious



About 1 out of 4 people  
who get measles will be  
hospitalized.



1 out of every 1,000 people  
with measles will develop brain  
swelling due to infection  
(encephalitis), which may lead  
to brain damage.



1 or 2 out of 1,000  
people with measles  
will die, even with  
the best care.



**You have the power to protect your child.**

Provide your children with **safe and long-lasting protection** against measles by making sure they get the **measles-mumps-rubella (MMR) vaccine** according to CDC's recommended immunization schedule.

[yellowhawk.org/communityresources](http://yellowhawk.org/communityresources)

[www.cdc.gov/measles](http://www.cdc.gov/measles)

Distributed by:



**YELLOWHAWK**  
TRIBAL HEALTH CENTER



**U.S. Department of  
Health and Human Services**  
Centers for Disease  
Control and Prevention